

ROTA FLOW 1300

G2

Fertilizers and Distributors

Bringing the qualities that make the Flow line the most recognized in its class, we now present the new Rota Flow 1300 G2. Ease, performance, and precision meet a modern design. The Rota Flow system is an exclusive system that allows fertilizer or seed to reach the launcher disc without suffering impact or shock. The fertilizer or seed slides over the system and is launched smoothly and precisely by the fins, avoiding fragmentation of the particles.

The Rota Flow 1300 G2 brings among its main new features:

A lighter and more resistant chassis that facilitates coupling with the tractor;

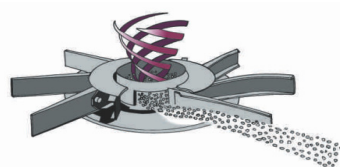
Redesigned eccentric agitator system that maintains constant flow without damaging the granulometry of fertilizers and seeds;

New and more efficient opening system.

In addition, it has a hydraulic system to open the gates with optional 4 or 2 hoses, where from the tractor, one side or both can be closed together. It has easy calibration and once calibrated according to the operating manual, the application up to a working width of 24 m is uniform and precise.



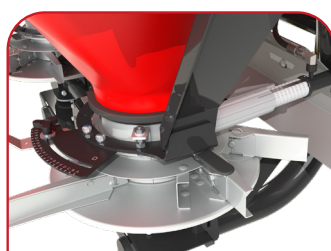
Eccentric agitator



Fertilizer flows towards the blades as a result of rotation



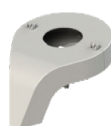
An automatic gearbox transmission system with conjugated gears



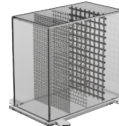
Easy-to-change blades

CALIBRATION KIT INCLUDED

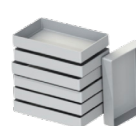
CALIBRATION BOX



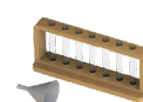
GRADUATION BOX



BOX SET



DISTRIBUTION KIT



Características Técnicas

ROTA FLOW 1300 G2

Working width	From 9 to 24 m
Required revolution at PTO	540 rpm
Required power at PTO	From 30 to 50 hp
Loading capacity	1.300 lt
Weight	302 kg
Side length	2,2 m
Frontal length	1,4 m
Height	1,52 m